

Comparison of Similar Looking Plants

Asplenium longissimum and *Nephrolepis acutifolia*



Scientific name:

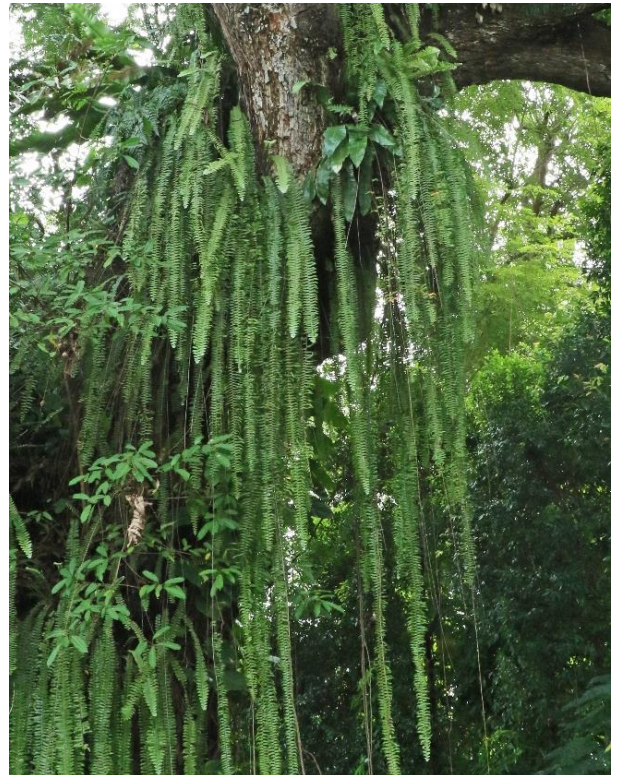
Asplenium longissimum Blume

Common name: Spleenwort

Family name: Aspleniaceae

Origin: Southeast Asia

Status: Native (Least Concern)



Scientific name:





Nephrolepis acutifolia (Desv.) H.Christ

Common name: Paku Uban Bukit

Family name: Nephrolepidaceae

Origin: Tropical Africa, Southeast Asia, Polynesia

Status: Native (EN)

	<i>Asplenium longissimum</i>	<i>Nephrolepis acutifolia</i>
Form	<ul style="list-style-type: none"> • Terrestrial or epiphytic plant 	<ul style="list-style-type: none"> • Terrestrial or epiphytic plant
Fronds	  <ul style="list-style-type: none"> • Drooping fronds, more than 100 cm long • May produce small plantlets on the rachis near the tip 	  <ul style="list-style-type: none"> • Drooping fronds, 150 cm or longer • Will not produce small plantlets on the rachis

Asplenium longissimum

Nephrolepis acutifolia

Leaf stalk (Stipe)



Fig. 1a



Fig. 2a

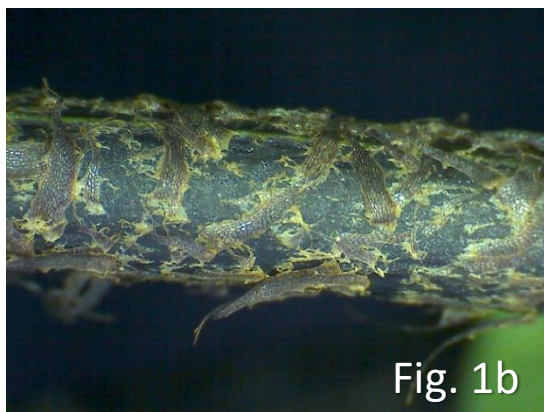


Fig. 1b

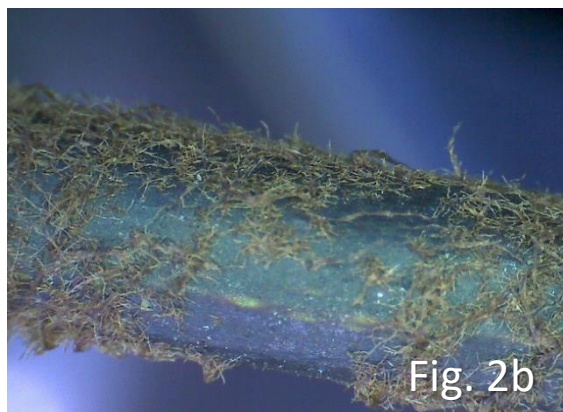


Fig. 2b

- Up to 20 cm or more
- Purple to black colour (Fig. 1a)
- Scales brown, flat, lattice-like and densely packed (Fig. 1b)

- 15 – 18 cm long
- Dark brown colour (Fig. 2a)
- Scales brown, woolly-tufted and densely packed (Fig. 2b)

Sori arrangement



- Starts from the midrib towards the margin on both sides
- Linear to slightly curved



- Along the margin on both sides
- Linear

Asplenium longissimum



Nephrolepis acutifolia

Leaflet
(Pinnae)



- Narrow tapered tip (Fig. 1c)
- Toothed margin (Fig. 1d)
- Two rows of ridges along the upper side of midrib (Fig. 1d)
- Leaflet base: boxy, wedge-shaped to round with ear-like lobes on both sides (Fig. 1e)

- Short broad tip (Fig. 2c)
- Smooth margin (Fig. 2d)
- Brown wooly scales on the upper side of the midrib (Fig. 2d)
- Leaflet base: boxy, heart-shaped to round base. May have ear-like lobes at the base (Fig. 2e)

	<i>Asplenium longissimum</i>	<i>Nephrolepis acutifolia</i>
Leaflet (Pinnae)	 <ul style="list-style-type: none"> • Sparse, black, forked scales on the underside of the pinnae 	 <ul style="list-style-type: none"> • Dense, light brown woolly scales on the underside of the pinnae

Reference

- Plants of the World Online
- Flora Malesiana, Series II Volume 4 (2012): Nephrolepidaceae
- Flora of Thailand Volume 3 Part 2 (1985): Pteridophytes