

CONTENTS

04

**CHAIRMAN'S
MESSAGE**

08

**MEMBERS OF
THE BOARD**

10

**MANAGEMENT
TEAM**

12

**ORGANISATION
STRUCTURE**

14

**GREEN
LIVING**

24

**GREEN
DIVERSITY**

38

**GREEN
COMMUNITY**

48

**GREEN
COLLAR**

60

**FACTS &
FIGURES**

63

**GARDEN
CITY FUND**

64

**CORPORATE
GOVERNANCE**

65

**FINANCIAL
REVIEW**

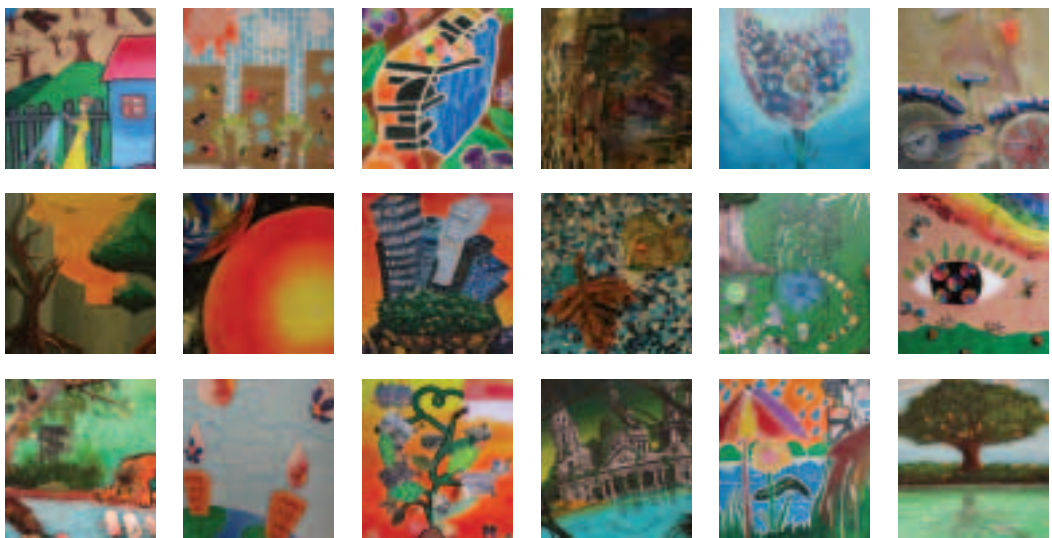
69

**FINANCIAL
STATEMENTS**

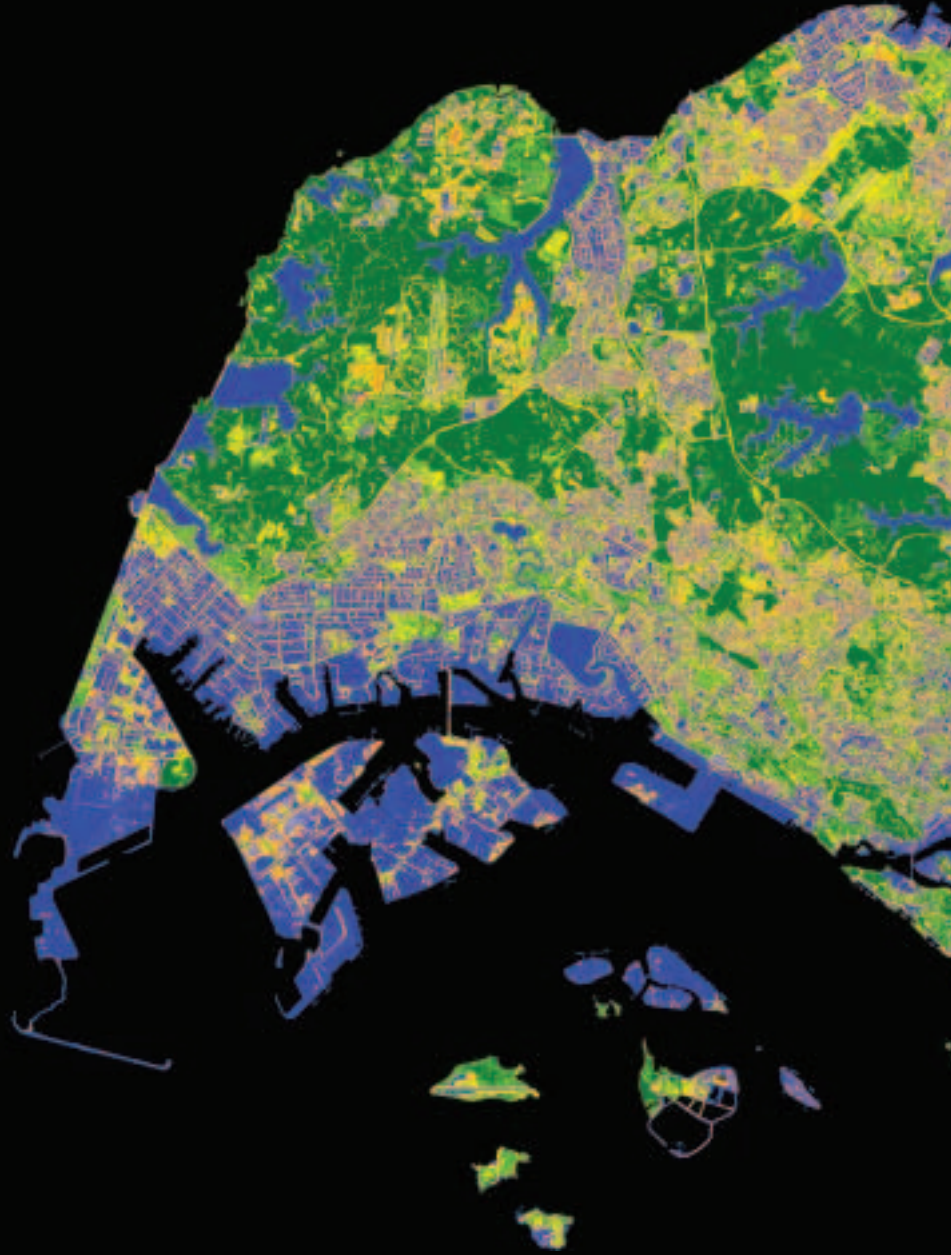
MY GREEN CITY

The development of the Garden City took root more than 40 years ago when then Prime Minister Lee Kuan Yew launched the Tree Planting Campaign in the 1960s. Since then, Singapore's greening efforts have transformed the island into a distinctively lush city that is almost 50% covered by greenery.

Going forward, our aim is to bring this to the next level – a city embraced in a garden of diverse flora and fauna. This vision is portrayed in many of the children's artwork featured inside. The drawings reflect the growing environmental awareness among our younger generation and underpin the need to safeguard our natural heritage.



Between **1986** and **2007**, despite the fact that the population grew by 68% from 2.7 million to 4.6 million,



Courtesy of Centre for Remote Imaging, Sensing and Processing (CRISP).



the green cover in Singapore grew from

35.7%

to **46.5%**